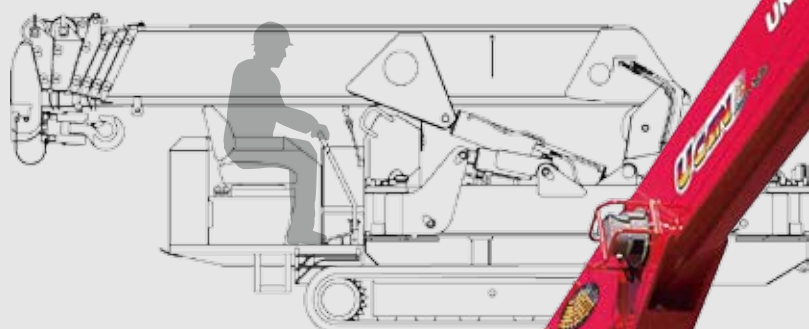


URW547C

URW547C provides maximum hook height of 18.2m with its seven section hydraulic boom.



with Safe load indicator (Option)



Max.
18.2m

Hook height (Approx.)
(Above ground level)

Max.
**4.05t
×2.5m**
Lifting capacity

Max.
17.83m
Working radius

5020kg
Mass of crane

Radio
remote
control

Photo: Standard model

SPECIFICATIONS [with Electric power unit]

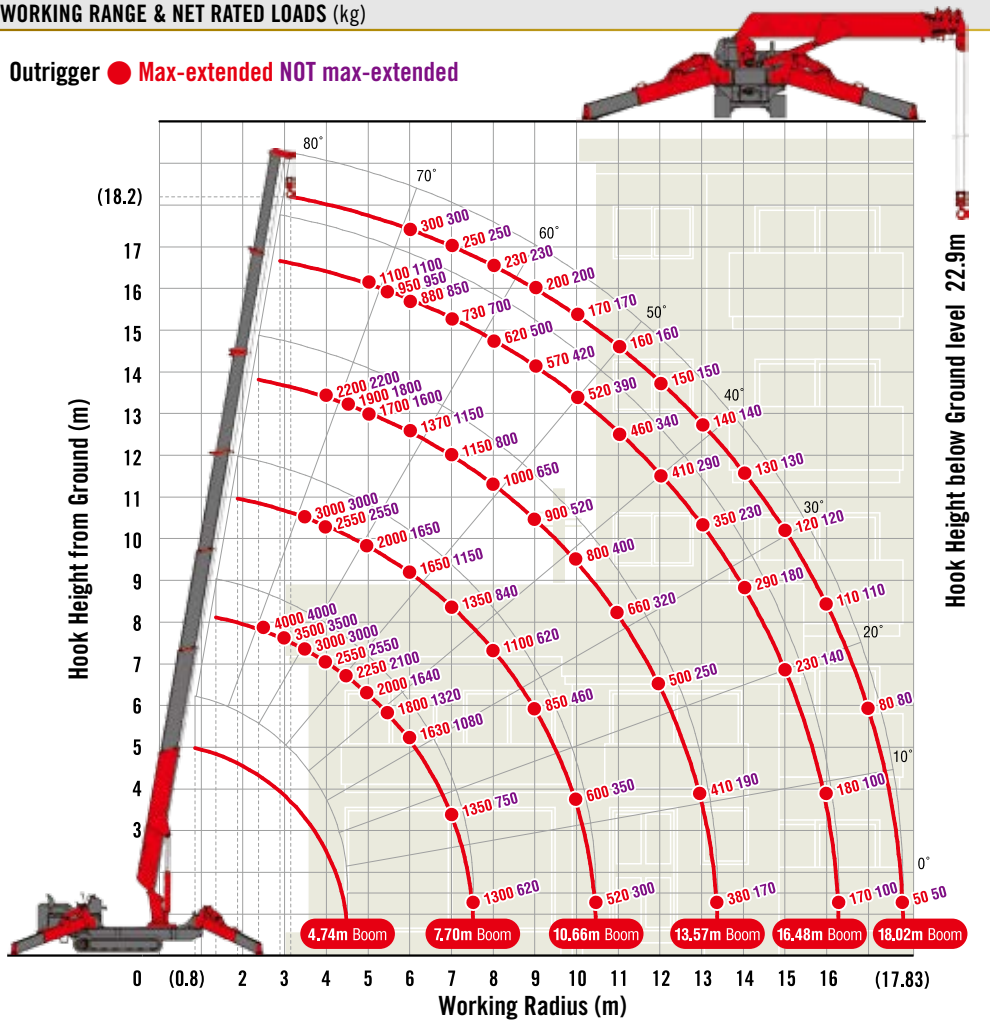
Crane model	URW547C4	
	A (Standard)	E-1(Safe load indicator)
Lifting capacity	Max. 4.05t at 2.5m	
Working radius	Min. 0.8m, Max. 17.83m	
Hook height (Approx.)	Max. 18.2m	
	Max. 22.9m (with 4-part line)	
Boom	Min. 3.99m to Max. 18.02m	
	Length	
	14.03m / 35 sec.	
	[50Hz] 14.03m / 57 sec. [60Hz] 14.03m / 48 sec.	
Extending speed	0° to 80° / 18 sec.	
	[50Hz] 0° to 80° / 30 sec. [60Hz] 0° to 80° / 25 sec.	
Raising angle / speed	7-section box beam type telescoping boom	
Structure	56 m/min (at 5th layer)	
Single line speed	[50Hz] 28 m/min (at 5th layer) [60Hz] 32.8 m/min (at 5th layer)	
	14 m/min (at 5th layer with 4-part line)	
Hook speed	[50Hz] 7m/min (at 5th layer with 4-part line) [60Hz] 8.2 m/min (at 5th layer with 4-part line)	
	Construction : IWRC L6 x P-WS(26) / Diameter x Length : 8mm x 103m / Breaking strength : 53kN [5400 kgf]	
Wire rope	4t capacity, 2 sheaves with safety latch	
Hook block	360° continuous rotation on a ball bearing race	
Range	2.5 rpm [50Hz] 2.0 rpm [60Hz] 2.3 rpm	
	Speed	
Stewing	A double acting hydraulic cylinder, direct pushing type (Directly connected with hydraulic automatic lock device)	
Outriggers	Variable delivery piston pump	
Type	For crawling: 21.6 MPa [220 kgf/cm ²] For crane: 20.6 MPa [210 kgf/cm ²]	
	Rated pressure	
Hydraulic pump	75 liters	
Hydraulic oil tank capacity	Pressure relief valve for hydraulic circuit / Counterbalance valves for boom raising and boom telescoping cylinders / Pilot-operated check valves for outrigger cylinders (Horizontal) / Double pilot-operated check valves for outrigger cylinders (Vertical) / Boom angle indicator with load indicator / Hook safety latch / Automatic mechanical brake for winch / Automatic stop for overwinding / Overwinding alarm / Automatic stop for leaving minimum wire rope / Emergency stop button / Inter-lock device of crane and crawling levers / Level / Three colored lamp / Headlight / Digital load meter* / Automatic stop for overloading* / Safe load indicator / Inter-lock device of crane and outriggers / Outrigger ground contact detector	
Safety devices [with Safe load indicator]		

* Only for standard model

MINI CRAWLER CRANE

WORKING RANGE & NET RATED LOADS (kg)

Outrigger ● Max-extended NOT max-extended



with Electric power unit (Option)



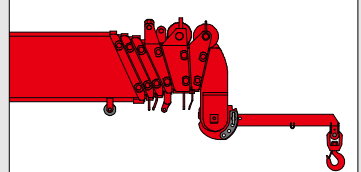
Rated power	7.5kW (3-phase 4 poles)
Voltage	AC 200V or 400V (50Hz / 60Hz)

*No cable included.

Three colored lamp



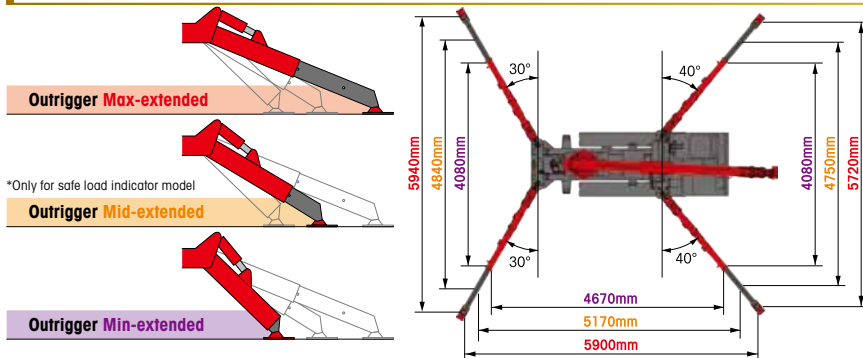
Searcher hook assembly (Option)



NOTE : Only for safe load indicator model.

Length	800mm
Lifting capacity	Max. 500kg
Tilt angles	0°, 20°, 40°, 60°

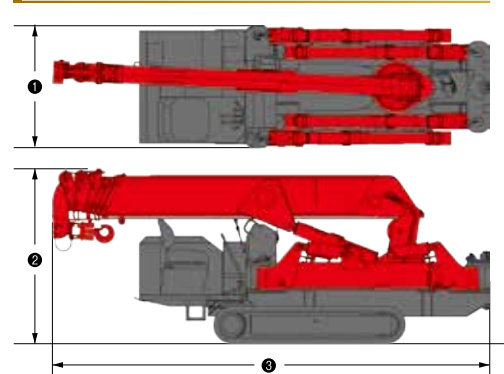
OUTRIGGER POSITIONS



CRAWLING GEAR [with Electric power unit]

Crane model	URW547C4
Crawling speed	0~3 km/h, forward / backward [50Hz] 0~1.3 km/h [60Hz] 0~1.5 km/h
Hill climbing ability	23°
Tread length × width	1750mm × 300mm
Ground contact pressure	47.1 kPa [0.48 kgf/cm ²] 49.0 kPa [0.50 kgf/cm ²]
Engine manufacturer / model	Yanmar / 3TNV80F
Displacement	1266cc
Maximum output	15.2kW(20.7PS) / 2500 rpm, Rated output
Fuel	Diesel
Fuel tank capacity	40 liters
Steering	Hydraulic drive independent of left / right

DIMENSIONS [with Electric power unit]



Crane model	URW547C4
1 Total width	1380mm
2 Total height	1980mm
3 Total length	4950mm
Mass of crane	5070kg [5220kg]