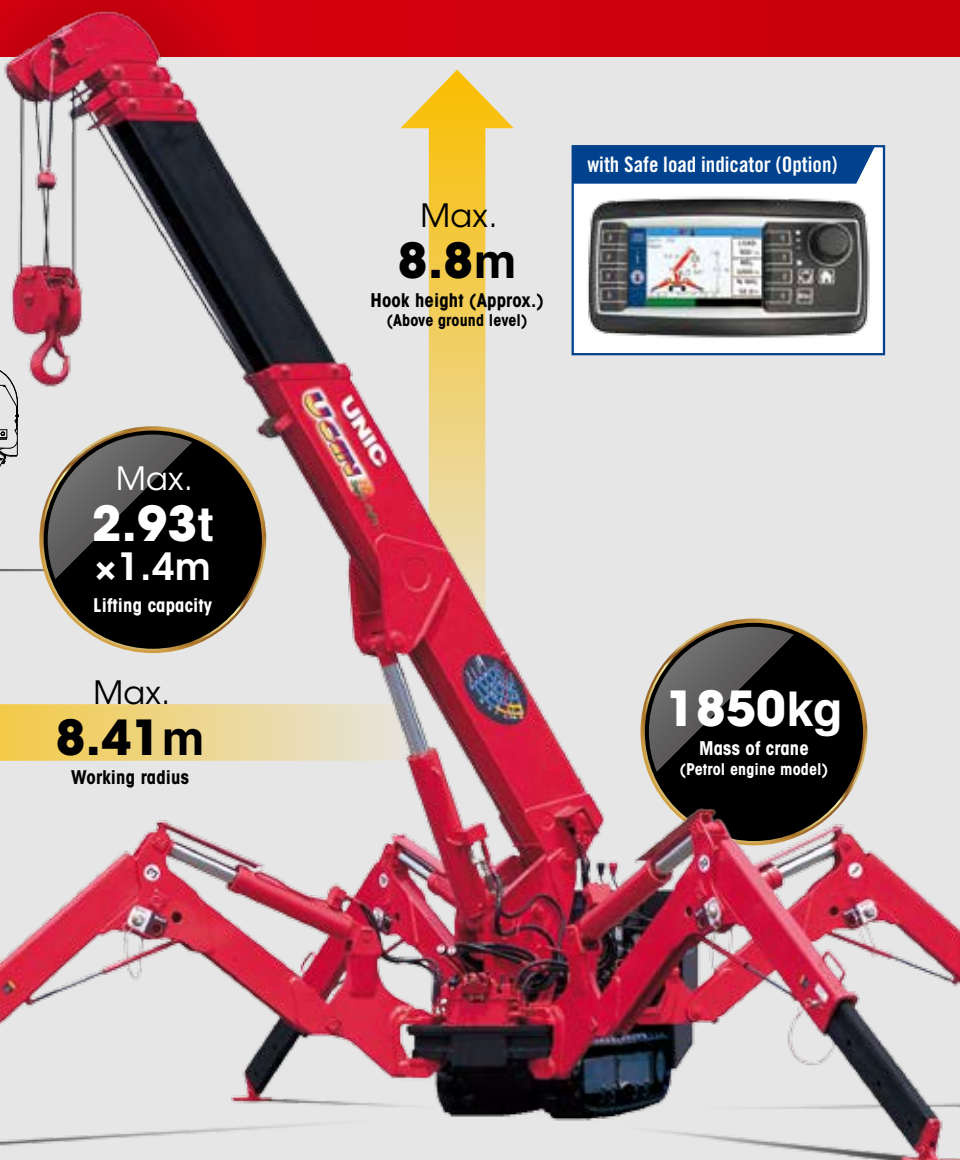
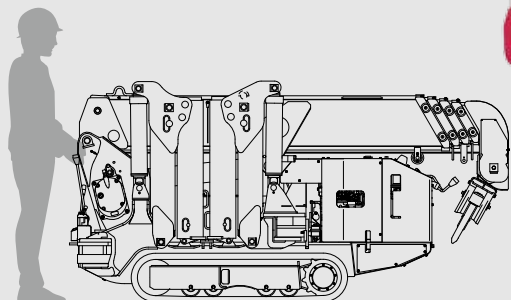


URW295C

URW295C is narrow enough to allow access through standard size single doorway, but with 2.93t of lifting power.



Max.
8.8m

Hook height (Approx.)
(Above ground level)

Max.
**2.93t
x 1.4m**

Lifting capacity

Max.
8.41m

Working radius

1850kg

Mass of crane
(Petrol engine model)

with Safe load indicator (Option)



Radio
remote
control

Photo: Standard model

SPECIFICATIONS [with Electric power unit]

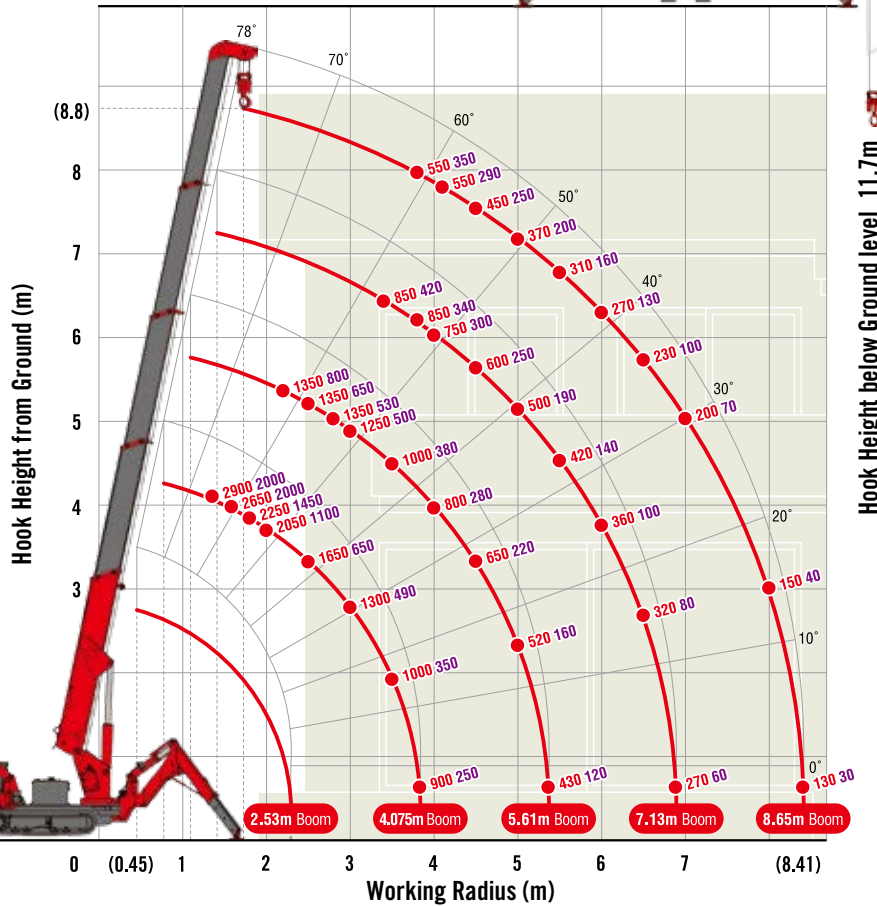
Crane model		URW295CP2		URW295C4	
		A (Standard)	E-1(Safe load indicator)	A (Standard)	E-1(Safe load indicator)
Lifting capacity		Max. 2.93t at 1.4m			
Working radius		Min. 0.45m, Max. 8.41m			
Hook height (Approx.)		Max. 8.8m			
		Max. 11.7m (with 4-part line)			
Boom	Length	Min. 2.53m to Max. 8.65m		Min. 2.53m to Max. 8.65m Min. 2.70m to Max. 8.65m	
	Extending speed	6.12m / 20 sec. [50Hz] 6.12m / 34 sec. [60Hz] 6.12m / 28 sec.		6.12m / 22 sec. 5.95m / 21 sec. [50Hz] 5.95m / 33 sec. [60Hz] 5.95m / 28 sec.	
	Raising angle / speed	0° to 78° / 11 sec. [50Hz] 0° to 78° / 18 sec. [60Hz] 0° to 78° / 15 sec.		0° to 78° / 12 sec. [50Hz] 0° to 78° / 18 sec. [60Hz] 0° to 78° / 15 sec.	
	Structure	5-section box beam type telescoping boom			
Winch	Single line speed	40 m/min (at 4th layer) [50Hz] 22 m/min (at 4th layer) [60Hz] 27 m/min (at 4th layer)			
	Hook speed	10 m/min (at 4th layer with 4-part line) [50Hz] 5.5 m/min (at 4th layer with 4-part line) [60Hz] 6.7 m/min (at 4th layer with 4-part line)			
	Wire rope	Construction : IWRC 6 x WS(26) GRADE B / Diameter x Length : 8mm x 54m / Breaking strength : 42.4kN [4320 kgf]			
	Hook block	2.9t capacity, 2 sheaves with safety latch			
Slewing	Range	360° continuous rotation on a ball bearing race			
	Speed	1.5 rpm			
Outriggers		2-section (with damper) for bend and 5-section extension(front) / 4-section extension(rear). Double acting hydraulic cylinders with pilot-operated check valves, direct pushing type (Directly connected with hydraulic automatic lock device)			
Hydraulic Pump	Type	Variable delivery piston pump			
	Rated pressure	For crawling: 21.6 MPa [220 kgf/cm ²] For crane: 20.6 MPa [210 kgf/cm ²]			
Hydraulic oil tank capacity		27 liters			
Safety devices [with Safe load indicator]		Pressure relief valve for hydraulic circuit / Counterbalance valves for boom raising and boom telescoping cylinders / Double pilot-operated check valves for outrigger cylinders / Boom angle indicator with load indicator / Hook safety latch / Automatic mechanical brake for winch / Automatic stop for overwinding / Overwinding alarm / Emergency stop button / Inter-lock device of crane and crawling levers / Level / Slewing restriction limit switch / Turn over prevention device* / Load meter* / Safe load indicator / Inter-lock device of crane and outriggers / Outrigger ground contact detector / Three colored lamp / Headlight			

* Only for standard model

MINI CRAWLER CRANE

WORKING RANGE & NET RATED LOADS (kg)

Outrigger ● Max-extended NOT max-extended



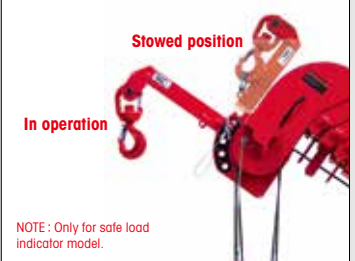
with Electric power unit (Option)



Rated power	3.7kW (3-phase 4 poles)
Voltage	AC 200V or 400V (50Hz / 60Hz)

*No cable included.

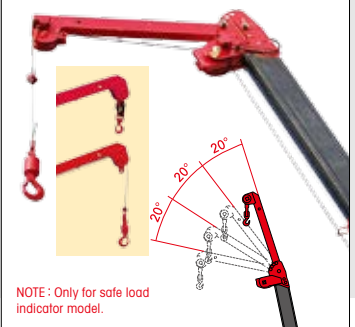
Searcher hook assembly (Option)



NOTE: Only for safe load indicator model.

Length	500mm
Lifting capacity	Max. 300kg
Tilt angles	0°, 20°, 40°, 60°

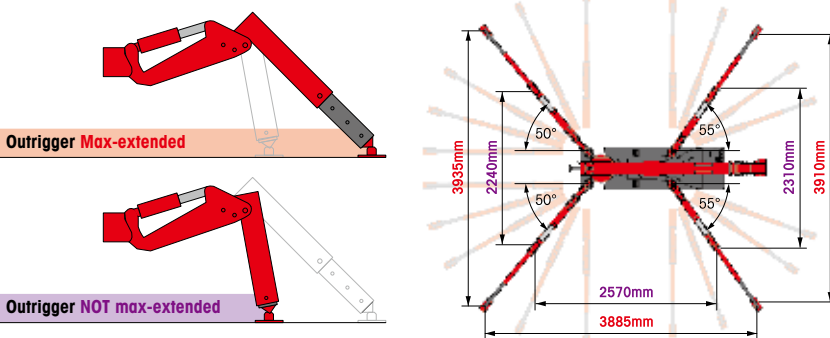
Fly jib assembly (Option)



NOTE: Only for safe load indicator model.

Length	1.5m
Lifting capacity	Max. 710kg
Tilt angles	0°, 20°, 40°, 60°

OUTRIGGER POSITIONS

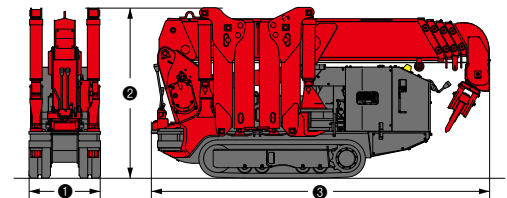


NOTE: Safe load indicator model may place each outrigger at one-angle

CRAWLING GEAR [with Electric power unit]

Crane model	URW295CP2	URW295C4
Crawling speed	0~2.3 km/h, forward / backward [AC200V 50Hz] 0~1.2 km/h [AC200V 60Hz] 0~1.4 km/h [AC400V 50Hz] 0~1.1 km/h [AC400V 60Hz] 0~1.3 km/h	0~2 km/h, forward / backward [AC200V 50Hz] 0~1.2 km/h [AC200V 60Hz] 0~1.4 km/h [AC400V 50Hz] 0~1.1 km/h [AC400V 60Hz] 0~1.3 km/h
Hill climbing ability	20°	20°
Tread length × width	1050mm × 180mm	1050mm × 180mm
Ground contact pressure	48.0 kPa [0.49 kgf/cm ²] 51.4 kPa [0.52 kgf/cm ²]	49.8 kPa [0.51 kgf/cm ²] 53.0 kPa [0.54 kgf/cm ²]
Engine manufacturer / model	Mitsubishi / GB400LE	Kubota / Z482-E4B
Displacement	391cc	479cc
Maximum output	6.6kW(9PS) / 1800 rpm, Rated output	7.2kW(9.8PS) / 2600 rpm, Rated output
Fuel	Petrol	Diesel
Fuel tank capacity	6 liters	10 liters
Steering	Hydraulic drive independent of left / right	Hydraulic drive independent of left / right

DIMENSIONS [with Electric power unit]



Crane model	URW295CP2	URW295C4
① Total width	600mm	
② Total height	1375mm [1430mm]	1380mm [1450mm]
③ Total length	2690mm	2730mm [2900mm]
Mass of crane	1850kg [1980kg]	1920kg [2040kg]